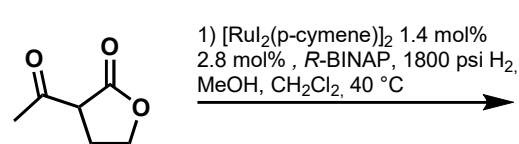
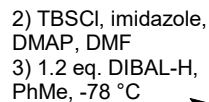


# (-)-Pseudolaric Acid B

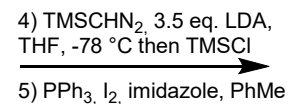
30.05.18



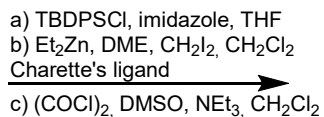
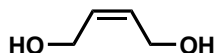
**A**



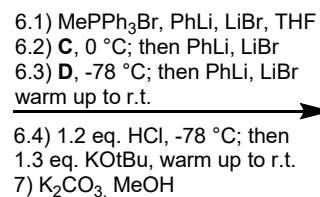
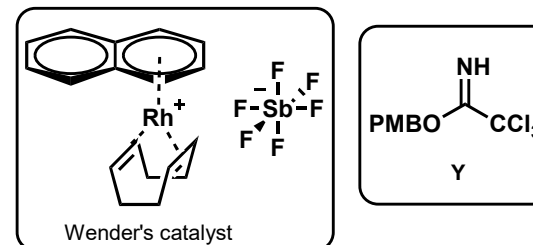
**B**



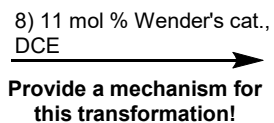
**C**



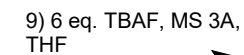
**D**



**E**



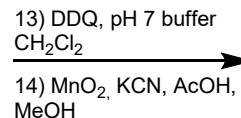
**F**



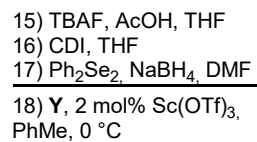
**G**



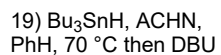
**H**



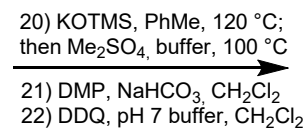
**I**

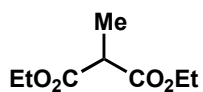


**J**



**K**





a) NaH, CHI<sub>3</sub>, Et<sub>2</sub>O  
b) KOH, EtOH, H<sub>2</sub>O,  
90 °C

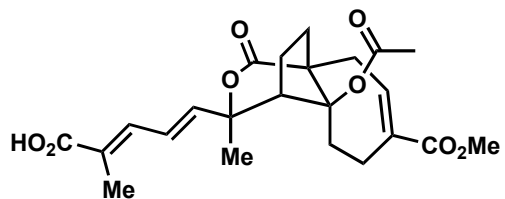
**Z**

27) Bu<sub>3</sub>SnH, THF  
5 mol% Pd(PPh<sub>3</sub>)<sub>4</sub>  
28) **Z**, 25 mol% Pd<sub>2</sub>(dba)<sub>3</sub>,  
DIPEA, NMP

**N**

23) TMSCCeCl<sub>2</sub> \* 2LiCl,  
THF, -78 °C  
24) 20 mol % [Bu<sub>2</sub>Sn(SCN)<sub>2</sub>]O  
(Otera's cat.), PhMe, 130 °C

**L**



(-)-pseudolaric acid B

**M**

25) TBAF, THF, 0 °C to r.t.  
26) Ac<sub>2</sub>O, 8 mol% Sc(OTf)<sub>3</sub>, 0 °C