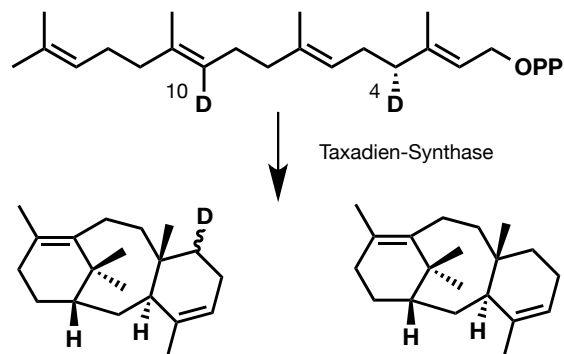


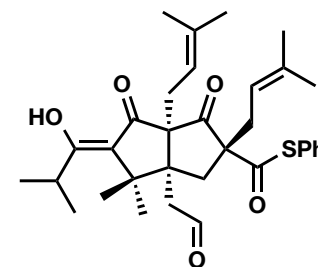
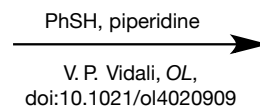
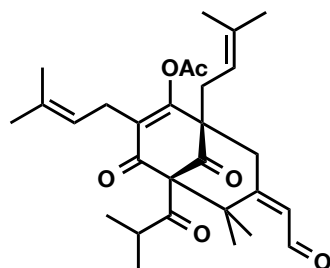
1. Team Grempel

Monodeuterated geranylgeranyldiphosphate was used (either at C₁₀ or at C₄). Explain the results and give the correct stereochemistry for the chiral D-center.

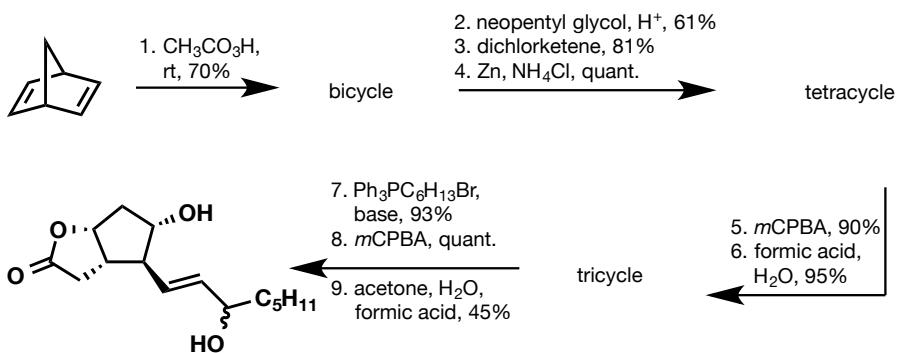


give stereochemistry for D

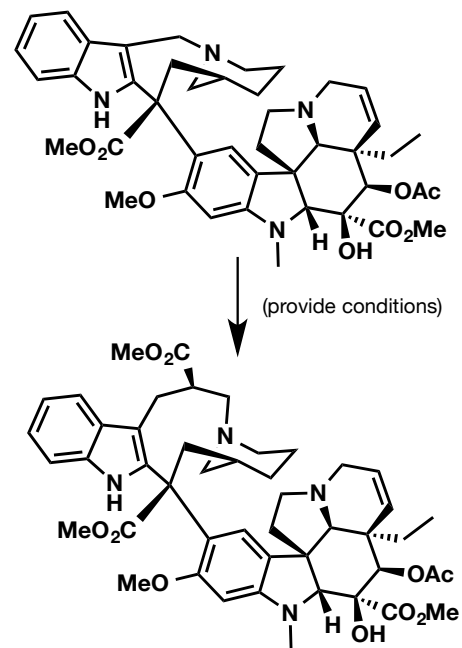
D. C. Williams, B. J. Carroll, Q. Jin, C. Rithner, S. R. Lenger, H. G. Floss, R. M. Coates, R. M. Williams R. Croteau, *Chem. Biol.*, **2000**, *7*, 969



2. Team Transformative

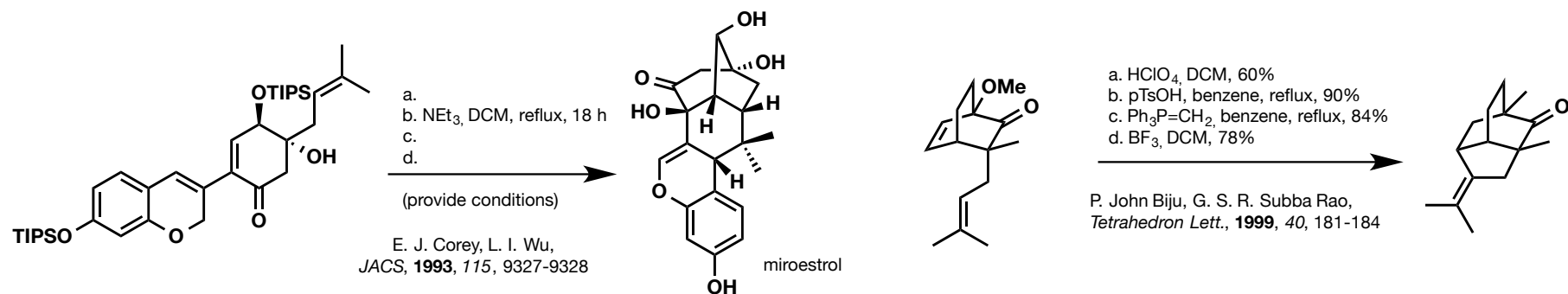


R. C. Kelly, V. VanRheenen, I. Schletter, M. D. Pillai, *JACS*, **1973**, *95*, 2746

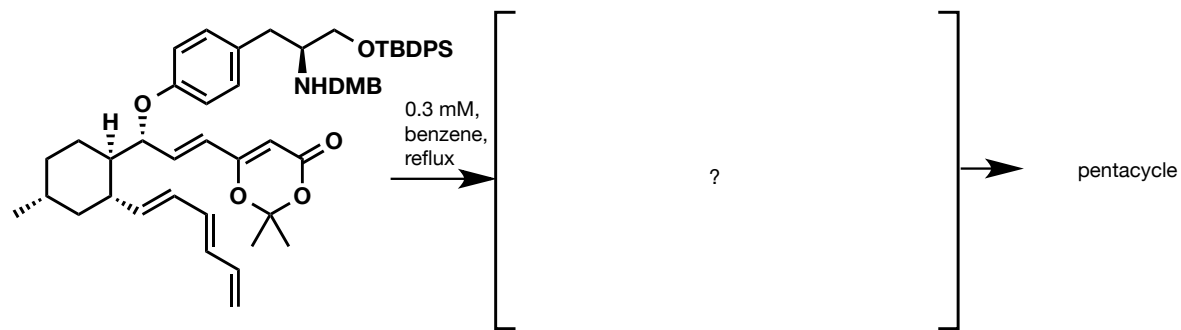
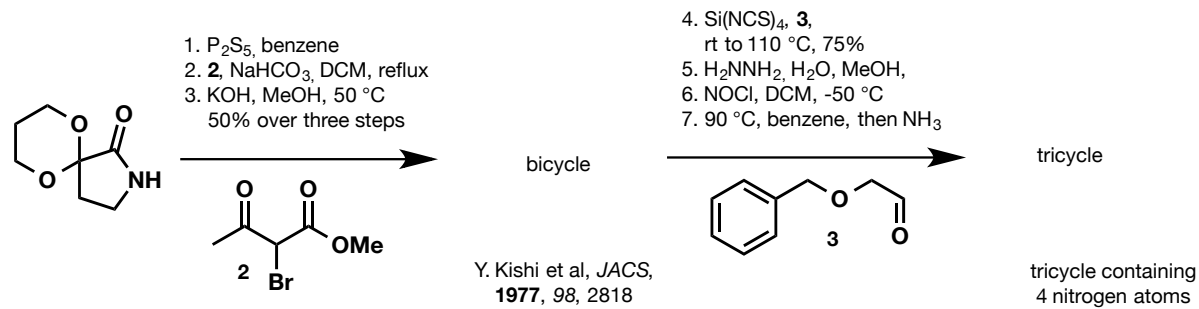


F. Roussi et al, *J. Med. Chem.*, **2013**, *56*, 6088-6100

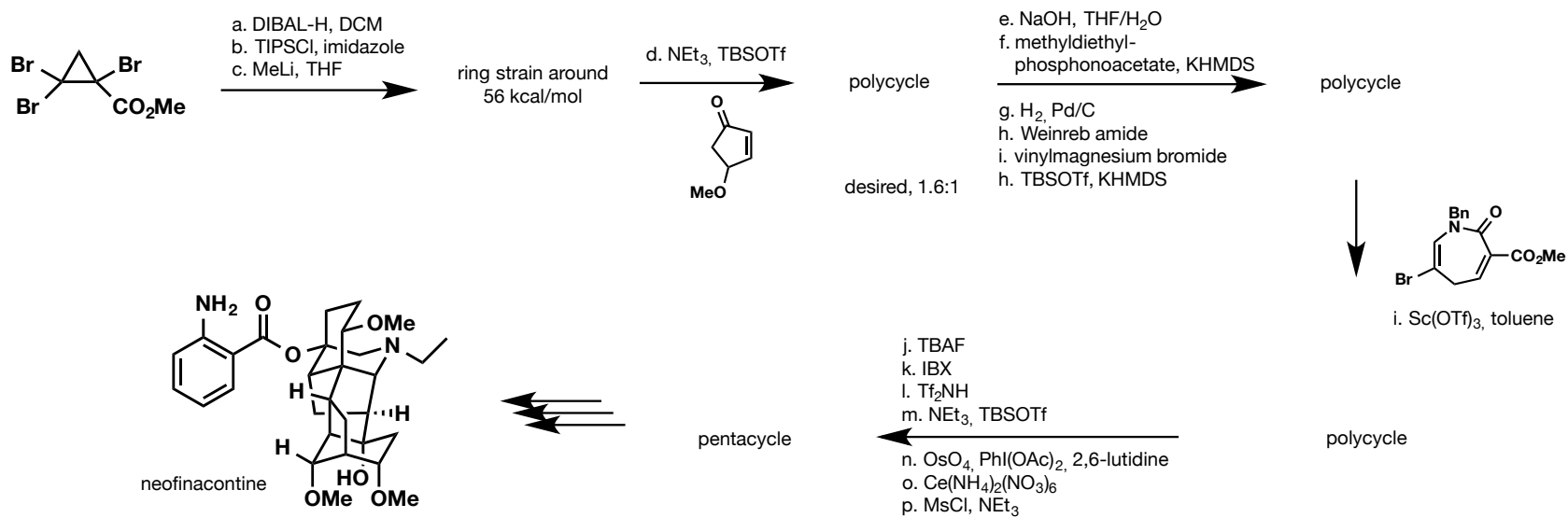
3. Team Christantin



4. Team Rubus



5. Team Tanja



D. Y. Gin et al, *JACS*, **2013**, *135*, 14313-14320