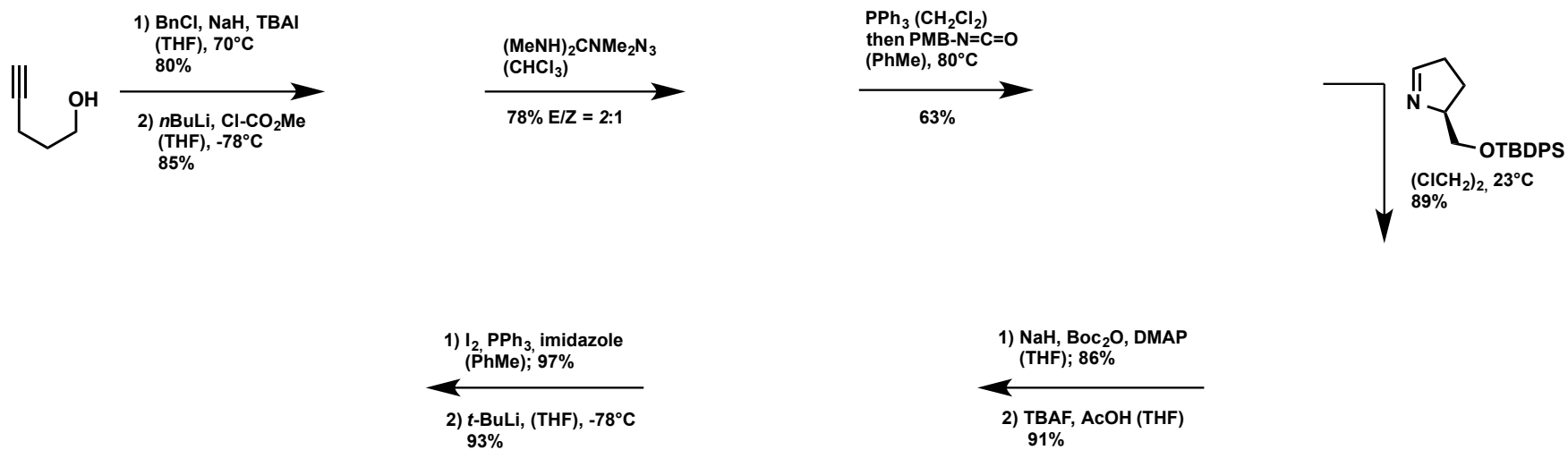
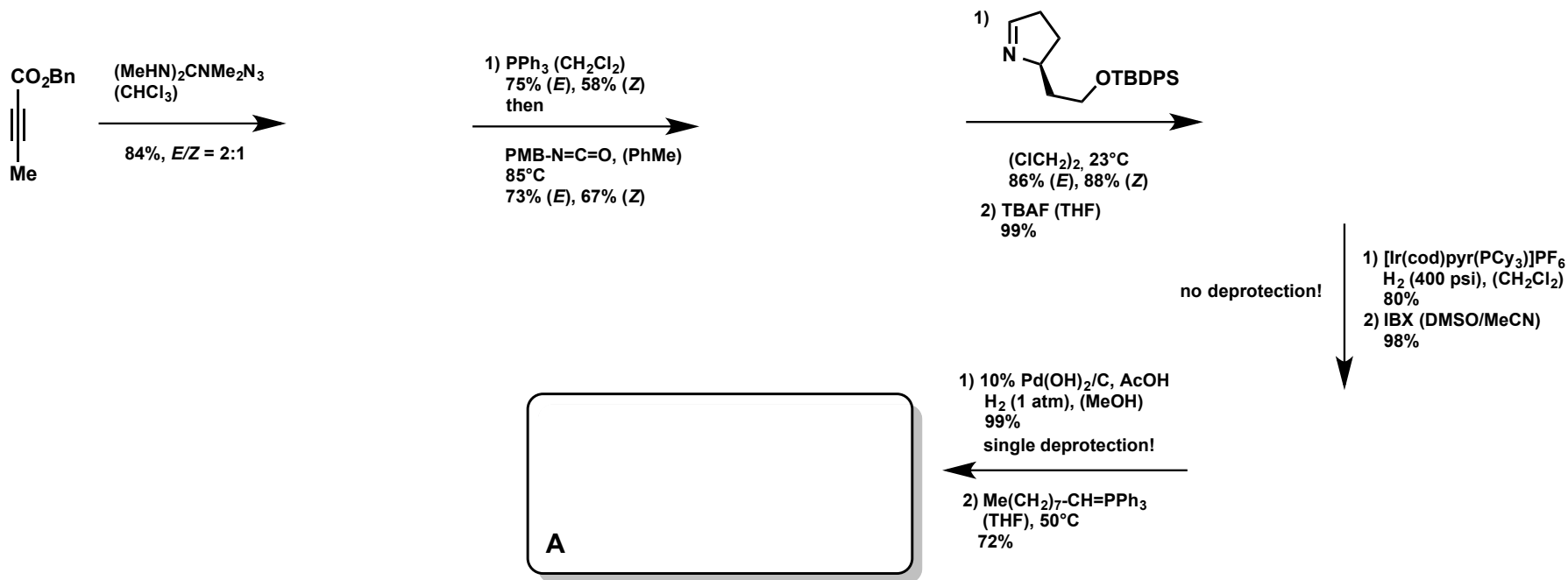
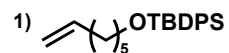


(-) - Batzelladine A M. A. Arnold, K. A. Day, S. G. Durón, D. Y. Gin JACS 2006, 128, 13255 - 13260



(-) - Batzelladine A M. A. Arnold, K. A. Day, S. G. Durón, D. Y. Gin JACS 2006, 128, 13255 - 13260



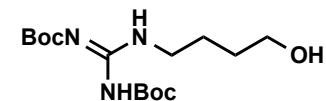
Grubbs 2, (CH₂Cl₂)
45°C; 73%

2) 10% Pd(OH)₂, AcOH
H₂ (1 atm) (MeOH/CH₂Cl₂)
90%
3 steps!

1) DIAD, PPh₃, (PhMe)
93%

2) NaH, Boc₂O, DMAP
(THF); 85%

1) EtSLi, HMPA
2) BOP-Cl, NEt₃, (CH₂Cl₂)



55% (over 2 steps)

1) TBAF, (THF)
92%

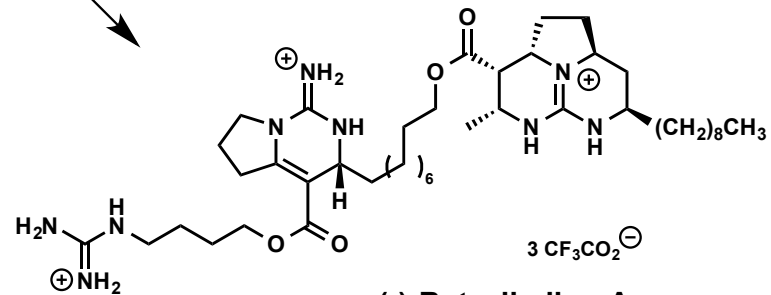
2) MsCl, NEt₃, (CH₂Cl₂)
0°C; 91%

B

A + B

Cs₂CO₃, (DMF)
50°C; 68%

1) I₂, Cs₂CO₃, (DME); 72%
2) 10% Pd/C, NEt₃, H₂ (1 atm)
(EtOAc); 71%
3) TFA, 0°C; 75%



(-) - Batzelladine A